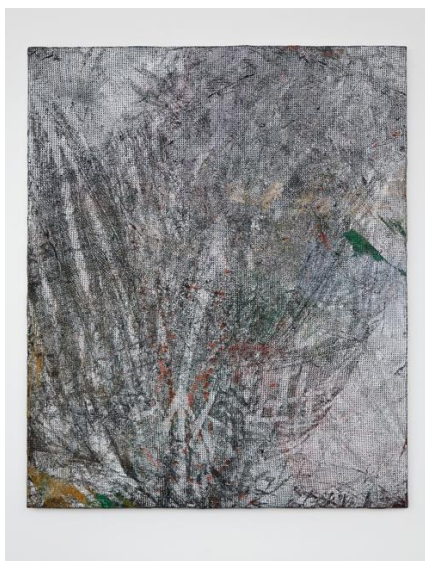


**FOR IMMEDIATE RELEASE**

**GARTH WEISER**



**15 MAY – 29 JUNE 2019**  
**PRIVATE VIEW: TUESDAY, 14 MAY, 6 – 8pm**  
**SIMON LEE GALLERY, HONG KONG**

Simon Lee Gallery, Hong Kong, is pleased to present an exhibition of new paintings by Garth Weiser, the artist's third with the gallery.

Weiser's densely layered paintings celebrate and interrogate the possibilities of the genre. His unorthodox and exploratory approach to surface, dimensionality and perception has resulted in a body of work that is as engrossing and revealing, as it is imaginative.

The artist constructs his paintings layer by layer, reliant primarily on oil paint, spraying and scratching into the canvas' viscous surface to leave behind a collection of frenetic lines, curves and slashes. As a result of his distinct process, evocative in vigour of the highly-charged manner spearheaded by Abstract Expressionists Willem de Kooning and Jackson Pollock, the artist has succeeded in blurring the line between painting and sculpture, using thick impasto to create genre-defying paintings.

This most recent body of paintings sees Weiser explore an evolved sense of animation that has formerly lingered at the innermost layer of his dense oeuvre. The works are characterised by sprawling patterns and forms that stretch expansively across the canvas. Weiser's gestures veer wildly between organic forms, suggestive of insects or plant life, to frenzied and explosive expressions in vibrant colours set against seemingly impenetrable backgrounds. The patterns on these detail-laden paintings command the viewer's close attention; The paintings are more effectively untangled in-person and up-close unearthing and exposing the deeply-embedded layers of underpainting, which are often highlighted by the artist's incisions in the multiple layers; a process of removing the surface similar to the sgraffito technique in ceramics.

304, 3/F PEDDER BUILDING  
12 PEDDER STREET  
CENTRAL, HONG KONG  
T +852 2801 6252  
F +852 2801 6858  
HK@SIMONLEEGALLERY.COM

SIMON LEE GALLERY LTD  
REGISTERED IN ENGLAND 4316341  
GB 788 061 692

**NOTES TO EDITORS****About Garth Weiser**

Garth Weiser was born in Helena, MT in 1979 and lives and works in New York, NY. Weiser was recently the subject of solo exhibitions at Simon Lee Gallery, London, UK (2017); The Contemporary Austin, Austin, TX (2017); Casey Kaplan, New York, NY (2017); Simon Lee Gallery, Hong Kong (2016); Altman Siegel, San Francisco, CA (2014); and White Flag Projects, St. Louis, MO (2010). His work has been included in numerous group exhibitions, including Selections from the Marciano Collection, Marciano Art Foundation, Los Angeles, CA (2018); The Campaign for Art, San Francisco Museum of Modern Art, San Francisco, CA (2016); Surface Tension, The Flag Art Foundation, New York, NY (2015); Pattern: Follow the Rules, Eli and Edythe Broad Art Museum at Michigan State University, East Lansing, MI (2013); DECADE: Contemporary Collecting 2002-2012, Albright-Knox Art Gallery, Buffalo, NY (2012); Nothing Beside Remains, Los Angeles Nomadic Division (LAND), Marfa, TX (2011); Seeing is a Kind of Thinking: A Jim Nutt Companion, Museum of Contemporary Art Chicago, Chicago, IL (2011); and Big New Field: Artists in the Cowboys Stadium Art Program, Dallas Museum of Art, Dallas, TX (2010). Weiser's work is held in the collections of prominent institutions, including San Francisco Museum of Modern Art, San Francisco, CA; Dallas Museum of Art, Dallas, TX; The Hammer Museum, Los Angeles, CA; The Whitworth, University of Manchester, Manchester, UK; Eli and Edythe Broad Art Museum at Michigan State University, East Lansing, MI; Albright-Knox Art Gallery, Buffalo, NY; and Museum of Contemporary Art, Chicago, IL.

**About Simon Lee Gallery**

Founded in Mayfair, London in 2002, Simon Lee Gallery represents artists of diverse generations whose practices range from sculpture and painting to video and photography and who share a broad interest in an exploration of the conceptual. Aiming to provide a significant international audience for its artists, the gallery also regularly punctuates its programme with historical exhibitions and curated group shows, which present shifts in contemporary art practice and thought, whilst broadening the dialogue with artists outside of the gallery's core programme. In addition to its UK activity, in 2012 the gallery opened a space in Hong Kong, helping to introduce its artists to a wider public in Asia, with a fully independent programme. In 2014, Simon Lee Gallery opened an office and private viewing space. In 2017, the New York space was re-launched with an independent year-round programme of exhibitions and events, showcasing the work of emerging and established artists in dynamic group and solo exhibitions.

Facebook, Instagram, Twitter: @SimonLeeGallery  
[www.simonleegallery.com](http://www.simonleegallery.com)

Image: Garth Weiser, *Festi goer / namaste / pizzahog*, 2019, Oil and spray paint on canvas, 185.4 x 152.4 cm (73 x 60 in.)

For further press information, images and requests please contact Haniya Bhatti: [haniya@simonleegallery.com](mailto:haniya@simonleegallery.com)  
/ +44 (0) 207 491 0100

304, 3/F PEDDER BUILDING  
12 PEDDER STREET  
CENTRAL, HONG KONG  
T +852 2801 6252  
F +852 2801 6858  
[HK@SIMONLEEGALLERY.COM](mailto:HK@SIMONLEEGALLERY.COM)

SIMON LEE GALLERY LTD  
REGISTERED IN ENGLAND 4316341  
GB 788 061 692