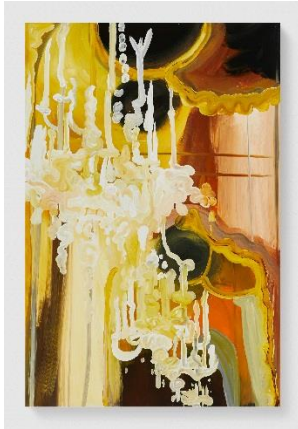


FOR IMMEDIATE RELEASE

**SIMON LEE GALLERY PRESENTS A SOLO BOOTH OF NEW WORK BY BRITISH PAINTER
CLARE WOODS AT DALLAS ART FAIR 2019**



**DALLAS ART FAIR
BOOTH F6
11 – 14 APRIL 2019**

For its third year participating in Dallas Art Fair, Simon Lee Gallery is proud to present a solo booth of seven new works by British painter, Clare Woods, a first for the artist at the fair. Woods will also launch a large scale, site-specific, watercolour mural, created as a permanent display for River Bend, a re-development project in the creative community housed in the Design District of Dallas, Texas, USA.

Over the course of a career spanning more than twenty years Woods has developed a unique painterly language that is concerned by the sculpting of an image in two dimensions. Originally trained as a sculptor, Woods established her reputation with large-scale landscape paintings rendered in enamel on aluminium. The artist derives inspiration from found photographic sources such as newspaper clippings, magazines, and other diverse sources of visual ephemera that depict unsettling, disturbing and often transgressive imagery. An astute chronicler of personal and historical trauma, she attempts in her painting to process the effects of grief, disappointment and cruelty even as it cryptically depicts those subjects.

Woods immersive paintings of a diverse scale have moved into figurative works that point to a more emotive mode of representation and are rendered in rich hues of oil paint that depict lived experience and cultural memory. Acute psychological states are portrayed through the nuances of Woods's gestural approach to painting, which defamiliarizes the familiar and expresses strangeness through expansive, vigorous brushwork, compositional distortion and abstract colour. Woods' interpretations shift between figuration and abstraction imbuing this central tension with volume, weight and interior mystery, continuously thinking of space and the object.

Commissioned by the Dallas Art Fair in collaboration with Simon Lee Gallery, the artist will realise watercolour works in the form of eleven 13-feet by 7-feet tile murals which will be on permanent display on the River Bend building's façade. Taking inspiration from the rich surrounding landscape, and the Trinity River, Wood's plays with the concept of scale which has been central to the artists thought process.

There will be an opening for Wood's site-specific commission at River Bend, on Wednesday 10 April and alongside the opening, there will be copies of a book published by the artist that will be available for purchase. Additionally, Woods will also be participating in a panel discussion with artists, Rosson Crow and Carrie Moyer, moderated by Anna Katherine Brodbeck. For further details please see editors notes.

NOTES TO EDITORS**About Clare Woods**

Clare Woods was born in Southampton in 1972 and lives and works in Herefordshire, UK. She received her MA from Goldsmith's College, London and her BA from Bath College of Art, Bath. Woods' work has been shown extensively internationally and has been the subject of numerous solo exhibitions and projects, including Simon Lee Gallery, New York, (2019), Mead Gallery, Warwick Arts Centre, Coventry, UK (2018); Dundee Contemporary Arts, Dundee, UK (2017); Pallant House Gallery, Chichester, UK (2016); Oriel Davies Gallery, Wales (2014), which travelled to Oriel-y-Parc, Wales (2015) and Oriel Plas Glyn-y-Weddw, Wales (2014); The New Art Centre, Salisbury, UK (2013); Southampton City Art Gallery, Southampton, UK (2012); The Hepworth Wakefield, Wakefield, UK (2011) and The Chisenhale Gallery, London, UK (2006). She has been included in major group exhibitions at venues including Pier Art Centre, Stromness, UK (2016); The Royal Albert Memorial Museum, Exeter, UK (2014); The National Museum Wales, Wales, UK (2014); ARKEN Museum of Modern Art, Denmark (2014) and Albright-Knox Art Gallery, Buffalo, NY (2009). Her work is in major and private collections including the Albright-Knox Art Gallery, Buffalo, NY; ARKEN Museum of Modern Art, Denmark and Arts Council Collection and British Council, London, UK.

About Simon Lee Gallery

Founded in Mayfair, London in 2002, Simon Lee Gallery represents artists of diverse generations whose practices range from sculpture and painting to video and photography and who share a broad interest in an exploration of the conceptual. Aiming to provide a significant international audience for its artists, the gallery also regularly punctuates its programme with historical exhibitions and curated group shows, which present shifts in contemporary art practice and thought, whilst broadening the dialogue with artists outside of the gallery's core programme. In addition to its UK activity, in 2012 the gallery opened a space in Hong Kong, helping to introduce its artists to a wider public in Asia, with a fully independent programme. In 2014, Simon Lee Gallery opened an office and private viewing space. In 2017, the New York space was re-launched with an independent year-round programme of exhibitions and events, showcasing the work of emerging and established artists in dynamic group and solo exhibitions.

Facebook, Instagram, Twitter: @SimonLeeGallery
www.simonleegallery.com

-

River Bend, commission opening
Wednesday, 10 April 6 -8pm
150 Manufacturing Street, Dallas

Three Approaches Regarding Abstraction: Rosson Crow, Carrie Moyer and Clare Woods talk moderated by Anna Katherine Brodbeck
Friday, April 12, 10.30 pm
Nasher Sculpture Center

Dallas Art Fair, Programme: <https://www.dallasartfair.com/visit/schedule/>
River Bend: <https://riverbenddallas.com/>

For further press information, images and requests please contact Haniya Bhatti:
haniya@simonleegallery.com / +44 (0) 207 491 0100.

Image: Clare Woods, *Meeting and Parting*, 2019. Oil on aluminium, 150 x 100 x 3 cm (59 1/8 x 39 3/8 x 1 1/8 in.) Courtesy the artist and Simon Lee Gallery